

# 4 Daylesford Way

\$498,000

Style and elegance in a premium location



This premium home is priced to sell and offers spacious, bright and easy open plan living for people who enjoy relaxing at home. Complete with two generous sized bedrooms (master with access to large main bathroom) both with BIR. It also includes a separate powder room providing more convenience for your visitors and guests.

Featuring a modern light filled chef's kitchen with walk-in pantry, Caesar stone benchtops and Bosch appliances, a separate spacious laundry, plenty of storage throughout the home and single lock-up garage with both internal access as well as access to the private low maintenance courtyard, perfect for al fresco dining and entertaining with plenty of room for a pergola!

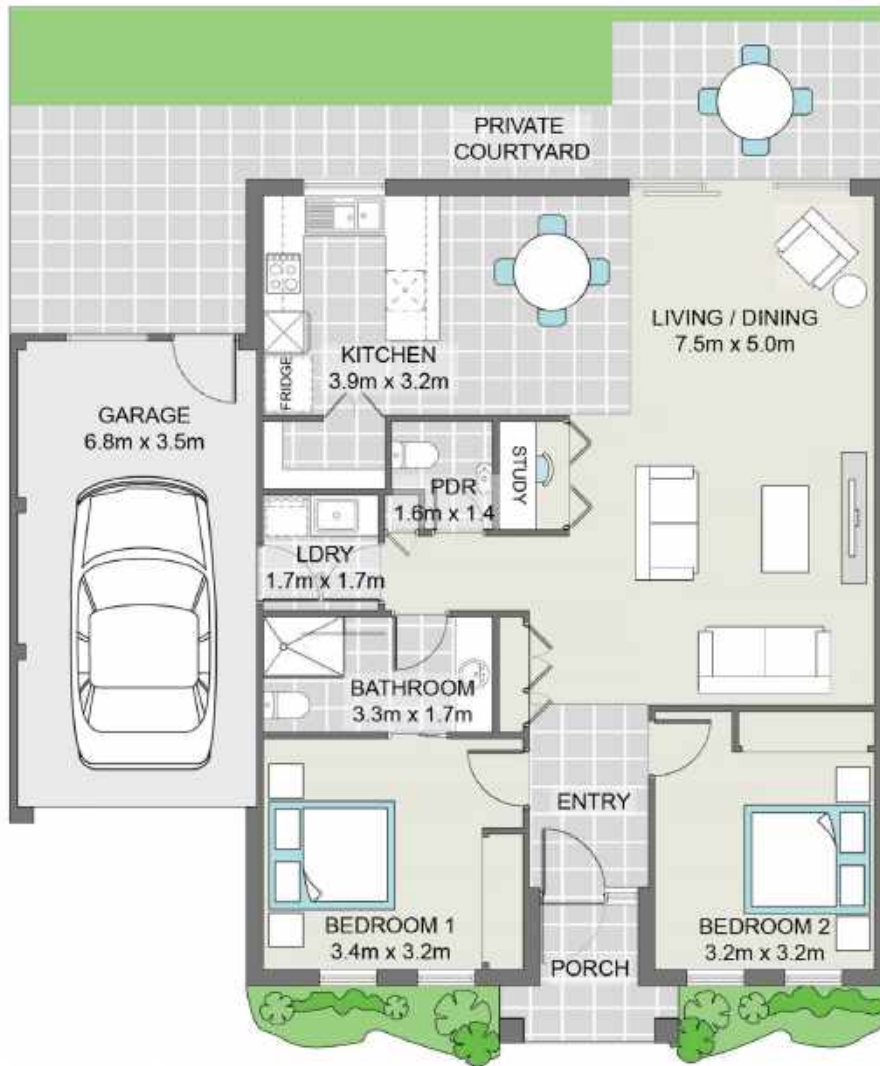
All the hard work is done! This is your chance to move in and truly experience premium retirement living in our perfectly positioned community overlooking stunning Port Phillip Bay close to everything you need.



# 4 Daylesford Way

\$498,000

Style and elegance in a premium location



|         | Home  | Garage | Total |
|---------|-------|--------|-------|
| m2      | 110.6 | 18.0   | 128.6 |
| Squares | 11.9  | 1.9    | 13.8  |

Measurements exclude courtyards, porches and eaves.

To arrange a personal tour please contact Wendy Prascevic  
on 03 5253 0111 OR 0455 112 360.

Please note: The plan and images contained in this brochure are indicative only.  
Homes may have been modified or mirrored. Inspect Now.