

# HENDERSON HOME



**Welcome to Bellarine Springs,** a new Pinnacle Living retirement community giving you more choice and freedom than ever before. Living in the stunning Bellarine Peninsula, only 700 metres from the shopping, food and wine hub of Drysdale, you can enjoy the best that life has to offer in a dynamic, welcoming environment that is safe and secure.

Perfectly positioned in a beautiful bayside setting and just 15 minutes to Geelong

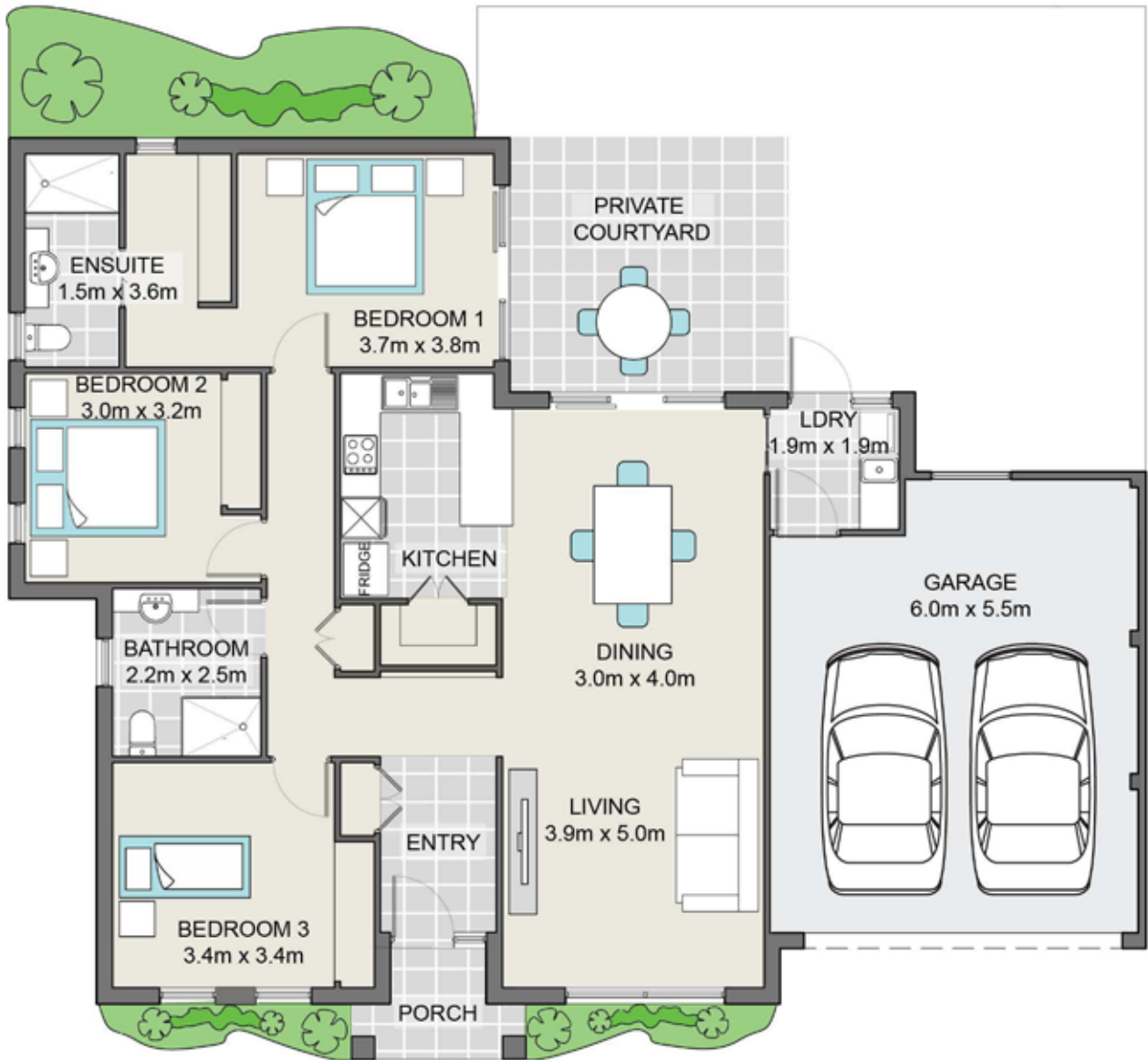
- Architect-designed homes, offering a secure and independent lifestyle.
- 24 hour/7 day emergency response provided by Village staff
- Village Community Centre offers a wellness centre, swimming pool, tennis court, bowling green and much more for you to enjoy.
- More to explore on your doorstep including 8 wineries, 5 golf courses, markets, boutique shops, museums and wildlife.

PINNACLE LIVING

BELLARINE  
**SPRINGS**  
*retire by the bay*

101 Central Road, Drysdale, VIC 3222  
Phone 03 5251 5577 [www.bellarinesprings.com.au](http://www.bellarinesprings.com.au)

# HENDERSON HOME



Our Henderson home offers a versatile floorplan, with 3 bedrooms for residents who have regular visitors.

## Features

- Main bedroom with ensuite bathroom
- Additional full bathroom next to the second and third bedrooms
- Open plan living, kitchen and dining area overlooking private rear courtyard
- Double lock up garage with internal access
- Reverse cycle air conditioning



		Garage	Total
m <sup>2</sup>	130.8	33	163.8
Sq	14.1	3.6	17.6

Measurements exclude courtyards, porches and eaves.

Please note: The plan, images and information contained in this brochure are indicative only and subject to change without notice. Homes may be modified or be mirrored.